

How To Create Layers

This short tutorial shows how to configure iRed Lite to control a specific application, for example PowerPoint.

As the default installation of iRL has no PowerPoint layer prepared, you have to build your own one. However, all necessary actions are part of the iRL distribution package. Look out for the folder "More Actions".

1. Start iRed Lite, open Editor

Start iRL by double clicking the iRL icon. iRL will not appear in your dock, but occupies only little space in your menu bar:



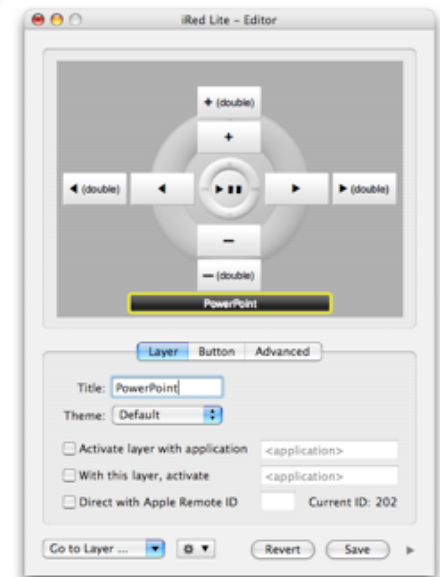
Open the Editor from iRL's menu.

2. Create a new layer

Choose "New Layer" from the popup menu:

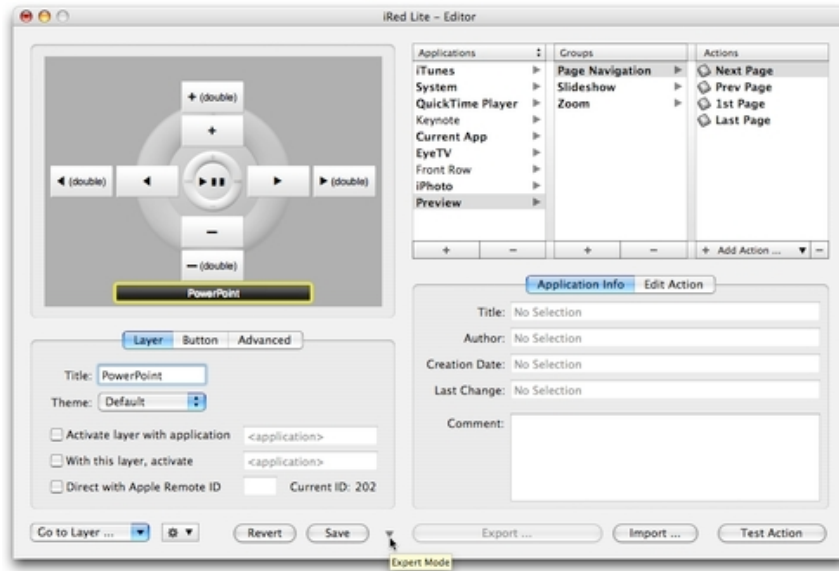


Then rename the layer to "PowerPoint":



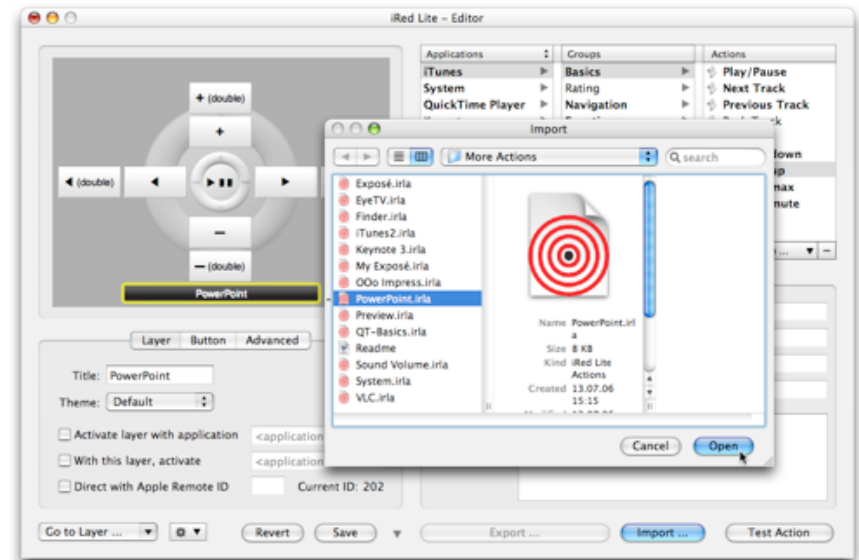
3. Switch Editor into Expert Mode

Click the small disclosure button on lower right of the Editor:

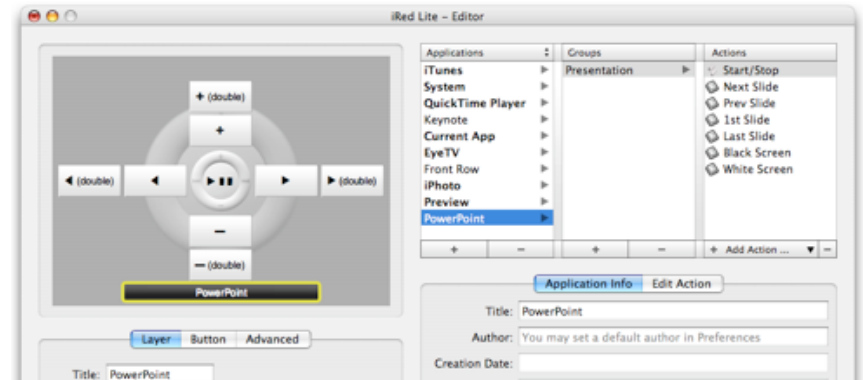


4. Import PowerPoint actions

Click "Import...", then use the Open Panel to find the PowerPoint action file:



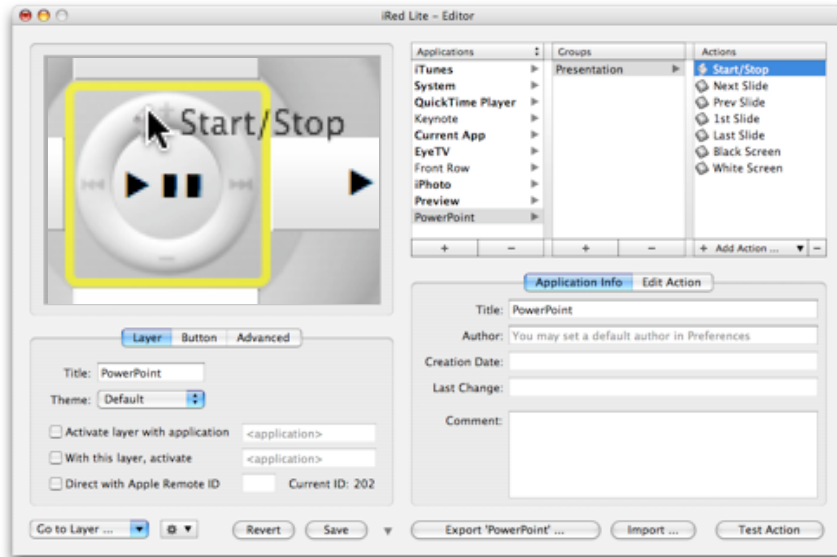
The actions are inserted into your archive of actions:



5. Assign actions to OSD buttons

The easiest way to assign the PowerPoint actions to a layer is by Drag&Drop.

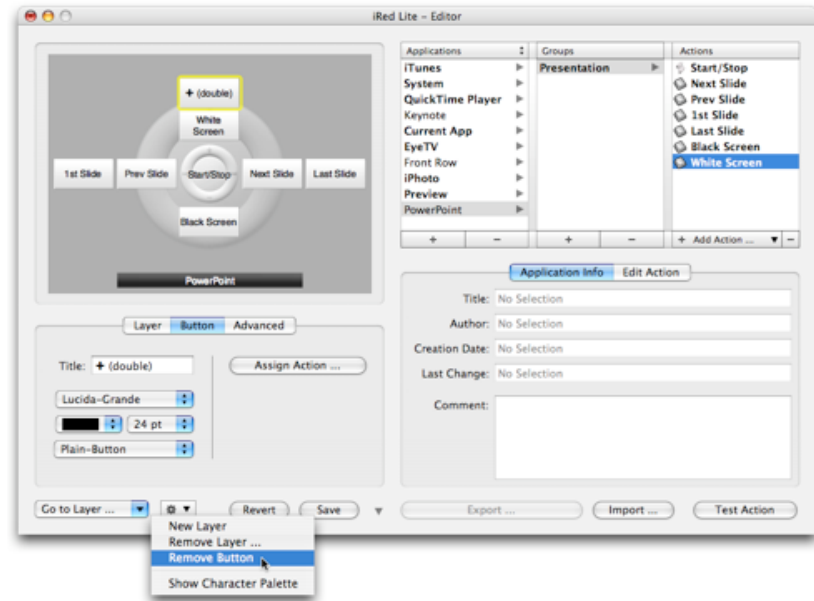
Take an action from the browser and drop it onto the respective OSD button. In this example I took the "Start/Stop" AppleScript action and put it onto the center button:



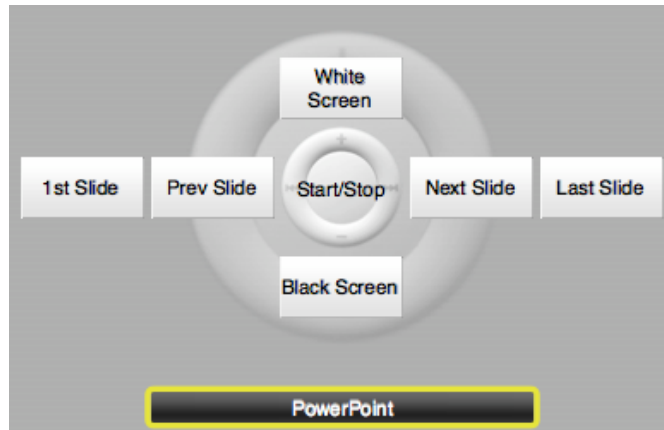
You may rename the OSD buttons now or leave the defaults. Put the other actions onto the up/down/left/right OSD buttons.

6. Remove superfluous buttons

In this example we don't need the double-up or double-down buttons. Just select a button and choose "Remove Button" from the popup menu:



This is my complete setup:



I've chosen to start and stop the slide show with the **center** button, go to next/previous slide with the **left/right** buttons. **Up** will turn my screen into white, **down** into black (and back). Double-pressing **left** or **right** will jump to 1st or last slide, respectively.

Don't forget to save this layout using the button at the bottom of the Editor, or just press ⌘-S.

7. Use the PowerPoint layer

Press **menu** on your Apple Remote to see which layout is currently active. You may have to navigate to the PowerPoint layer before you can use it:

- with the OSD on screen, hold **menu** for a second -> the layer title will highlight:
- Use **left/right** on your Apple Remote to switch layers
- As soon as PowerPoint layer is visible, press **center** button once to activate this layer.
- Press **menu** to hide the OSD.

Next time, even after restarting iRL, the PowerPoint layer will be the active one.

Open your PowerPoint presentation, press play on your Apple Remote and off you go!

Have Fun,

Robert Fischer, [tin:b Software](http://tin.b Software), March 2007