

iRed Lite – Manual

iRed Lite (iRL) was made for your Mac with a built-in IR port, i.e. **most Intel Macs** (iMac, Mac mini, MacBook, MacBook Pro, except the Mac Pro). Unfortunately Apple has omitted the IR port in many new machines, including MacBook Air.

(You may have a look at [iRed](#) for a different solution for machines without an IR port)

Together with your **Apple Remote (AR)**, iRed Lite allows you to control your Mac – in addition to **Front Row**.

The Features

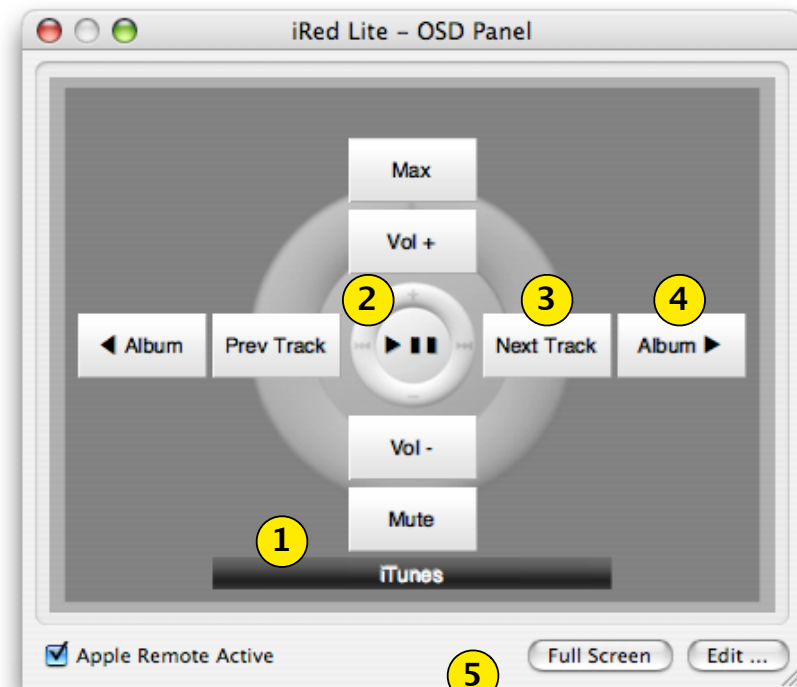
- Onscreen Display (OSD)
- Fullscreen OSD optional
- "Remote Layers" to control different applications
- Several example layers provided for iTunes, EyeTV, PowerPoint, Keynote, Finder, ...
- Automatic activation of remote layers with application
- Audio feedback optional
- Runs from menu bar – does not occupy space in your Dock
- Easy to be adopted to your special needs
- Build layers by Drag&Drop
- Expert mode vs. Easy mode
- Built-in editor for control actions
- AppleScript, Keystroke and Mouse actions (more to come)
- Recognizes Apple Remote press, hold and double-press
- Handles Apple Remote IDs (see separate manual from Help menu)
- **NEW with V1.1: Philips HUE supported** (OS X 10.8 or later)

Usage

On startup iRed Lite (**iRL**) will activate your Apple Remote (**AR**), so that every press of a button will be routed to iRL.

- **Press MENU once** on your Apple Remote to bring up the On-screen Display (**OSD**)

The OSD (for iTunes, e.g.) shows you what action is to be expected on pressing the respective button on your Apple Remote:



1. The active layer is displayed here, **hold menu** to change.
2. **Press center** button on your AR will tell iTunes to play/pause
3. **Press right** button once to proceed to next track
4. **Double-press** the **right** button to go to next album
5. Use controls to deactivate the AR, enter Full Screen mode or open the Editor.

Fullscreen mode

To enable fullscreen mode either click "**Full Screen**" on OSD panel or choose "**Use Full Screen OSD**" from iRL's menu.

If you press **menu** once, the full screen OSD appears. Press **menu** again and the OSD disappears.

The full screen OSD is meant for your information: "**What will happen if I press the respective button on my Apple Remote now**".

You may also use the full screen OSD by mouse:

- click buttons to perform the respective action
- *click layer button to enter menu mode* (not yet)
- click on an empty space to close the OSD

Menu Mode

If you hold the **menu** button for a second, iRL will go into menu mode, i.e. you may now choose a different layer:

- press **left/right** or **up/down** to switch layer
- press **center** or **menu** to activate selected layer

The currently selected layer may be announced by the built-in speech synthesizer. So you need not to look at the screen to change layers!

One of the next versions of iRL will feature a visual menu of all layers and makes navigating much easier!

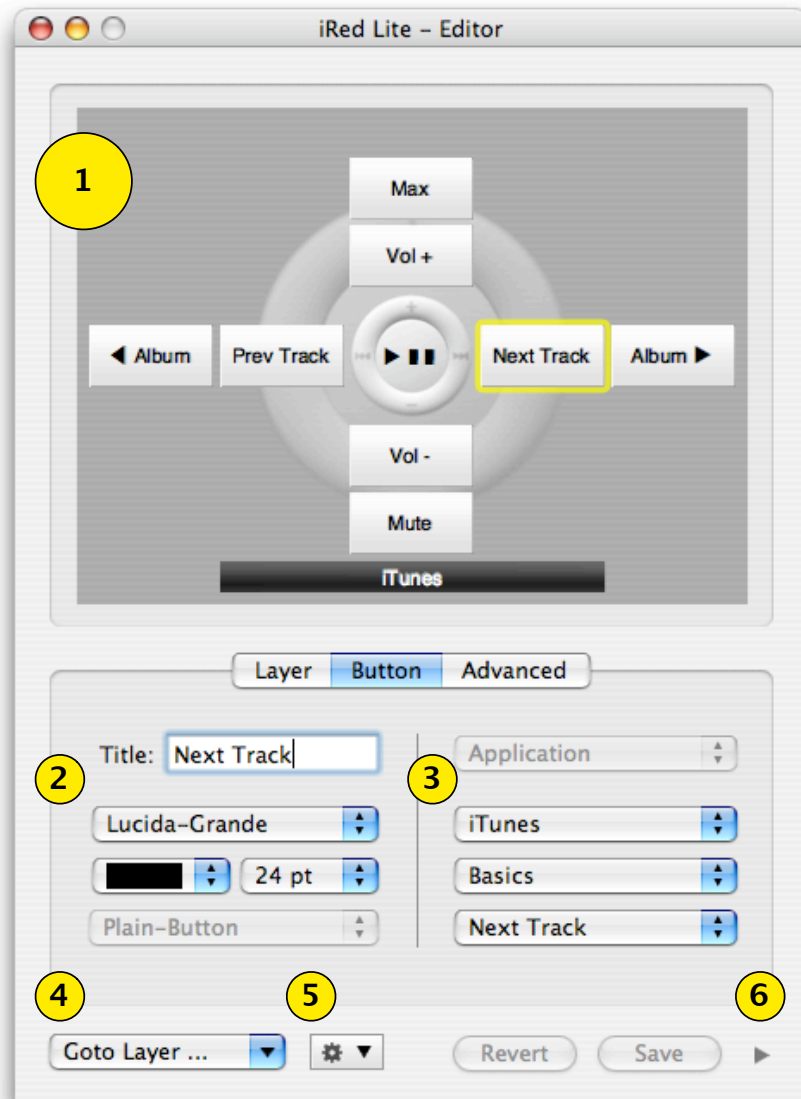
Holding down MENU button while in menu mode will deactivate the Apple Remote. Holding down again will activate the Apple Remote again. This way you can quickly choose to enable/disable iRed Lite, to use Front Row, e.g.

Keyboard control

All OSD buttons can be controlled by your keyboard, too.

- press cursor keys for the respective OSD buttons
- press SHIFT and the cursor keys to perform the double-actions
- press RETURN for center action
- press SPACE to enter menu mode, RETURN to leave it
- press ESCAPE to close OSD panel or full screen.

Editor



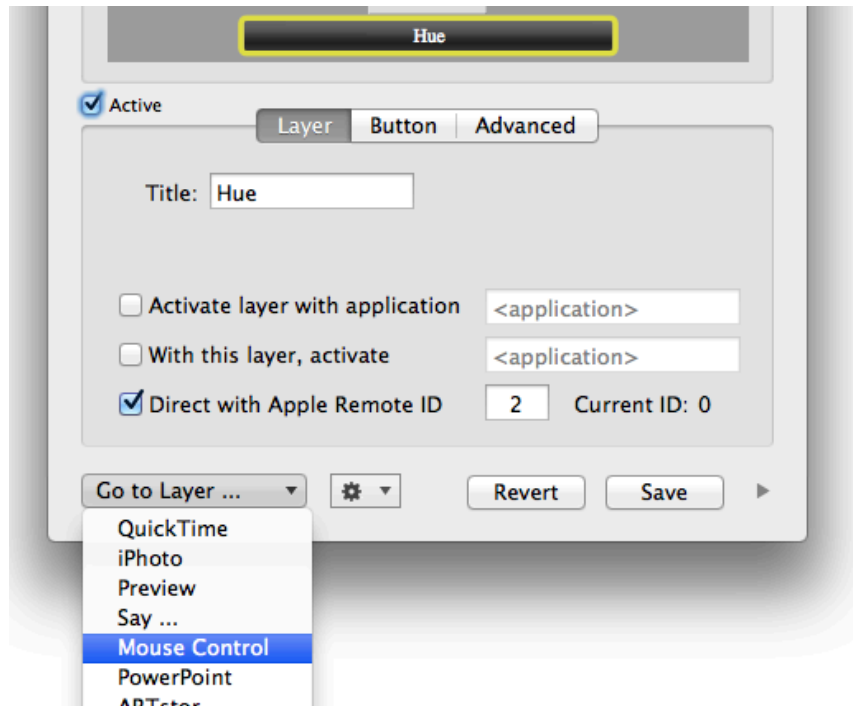
To open the Editor Window, click "**Edit...**" on the OSD panel or choose "**Show Editor**" from iRL's menu.

These are the main parts of the Editor window:

1. OSD panel as seen before. Here you select the OSD buttons to be edited. The action "behind" the buttons will not be performed!
2. Change the appearance of the button, change title, font, font size or font color.
3. Choose the action behind the button. The three popups are dedicated to Applications, action groups and actions.
4. Change the displayed layer by this popup menu.
5. Popup menu with more functions: remove selected button, create/remove layers and open the Character Palette for access to special characters and symbols like arrows.
6. This small disclosure button will put you into Expert Mode (see below)

"Layer" section

If you want to change the settings of the layer, click the respective tab or the layer OSD button itself. The lower part will change to this view:



Here you can change the name of the layer and some automatic activation mechanisms:

- **Activate layer with application:** if the named application becomes active, this layer will automatically become active, too. Please enter the exact name of the application as it appears in the Dock, e.g. **QuickTime Player**
- **With this layer, activate...:** If you change this layer by using menu mode, you may also activate an application at the same time.

- **Direct with Apple Remote ID:** directly activate this layer by pressing **menu** of the Apple Remote with the respective ID, and directly perform buttons of this layer, without needing to activate this layer before (please see separate manual from Help menu)

You can also change the active layer by your Apple Remote. See chapter „[Active Layer](#)“ for this.

The **Theme** popup button is not functional by now. Expect more designs to be applicable to the OSD soon!

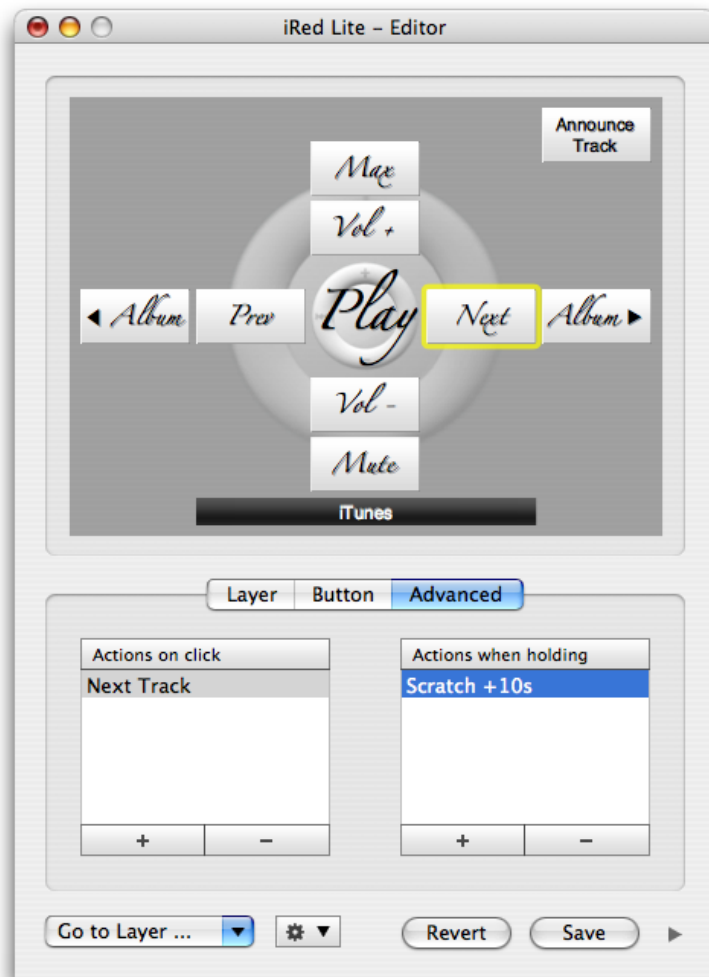
The popup "**Go to Layer ...**" warps you directly to a layer. Layers which are bound to a specific Apple Remote ID are labeled with their ID in the popup list.

"Advanced" section

You may perform multiple actions by pressing one button, or perform a different action, if the respective button is hold rather than pressed shortly. This is especially useful for iTunes:

In this example iTunes will skip to the next track when pressing the right button on the Apple Remote, but it will perform the action "Scratch +10s", to quickly scan a song, if the right button is hold.

To assign an action to either of both lists, just Drag&Drop an action from the action browser (see next chapter) into place. You may also select an action in the action browser, then press the "+" sign below the respective list.



Editor – Expert Mode

Clicking the small triangle on the lower right corner of the OSD panel, the Editor window expands into expert mode.

There you have the full control on actions, applications and grouping of actions.

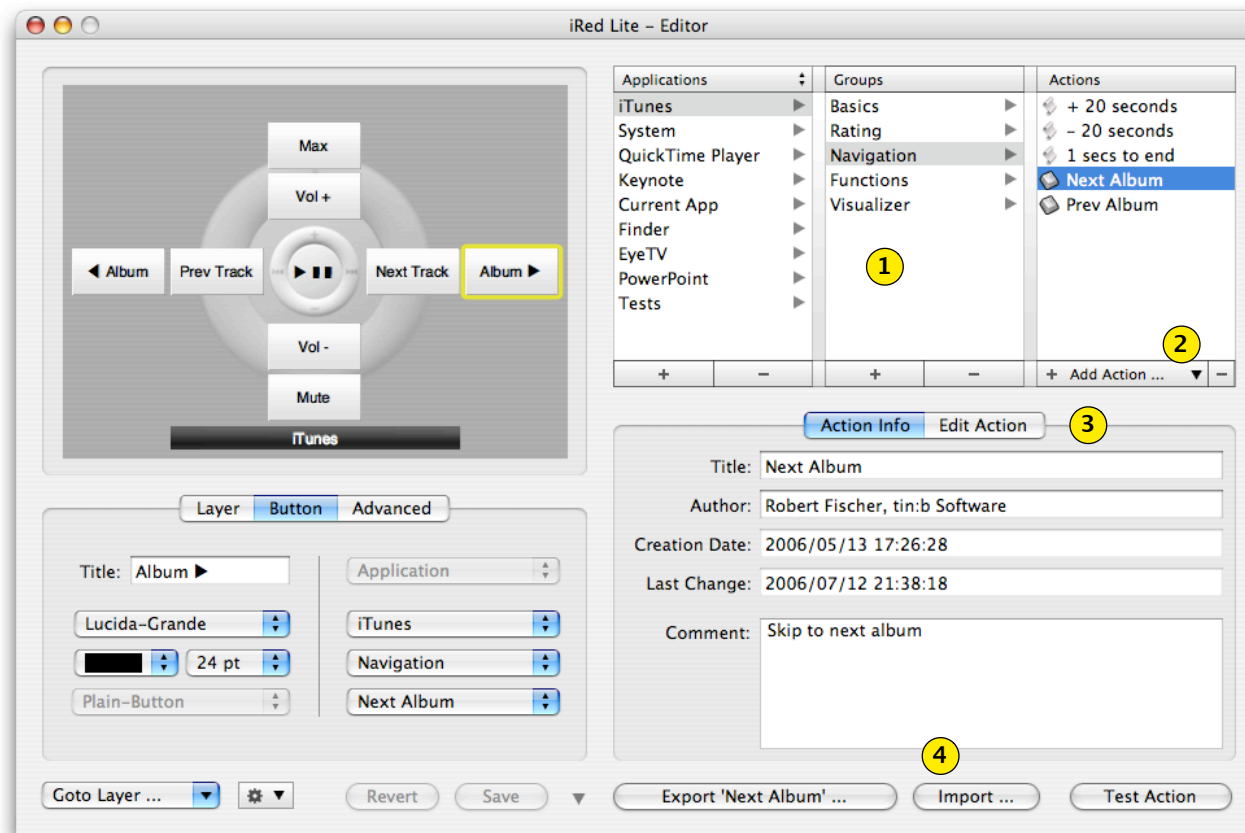
iRed Lite features a powerful editor to let you build your own actions to support your individual workflow.

However, to control other applications you'll probably need to know basics about AppleScript, Apple's powerful yet easy to learn language for scripting applications.

If you are not familiar with AppleScript you may use "keystroke actions", e.g. send iTunes a "Command-Cursor-Right" to switch to the next album. These kind of actions are very easy to achieve with iRed Lite.

These are the basic elements of the expert's Editor window:

1. Hierarchical browser to organize your actions by applications and groups.
2. Popup menu to create different kinds of actions.
3. Switch between basic infos of selected action and the "editing part" (see below)
4. You may export actions/groups/applications as well as import them by these buttons.



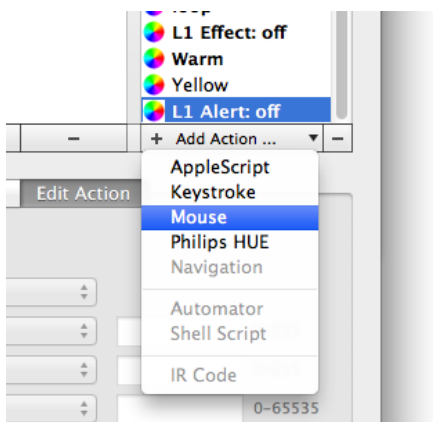
Creating a new Action

Actions can only be created as part of a group. Please create a group at your will using the "+" buttons in **Applications** and **Groups**. Renaming groups is simply done by double-clicking and editing the table entries. Reordering can be done by Drag&Drop, even between groups.

If you try to delete an action which is in use by any OSD button, you will be warned.

If you create a new action the current date and time will be filled in automatically, as well as the author's name. You may set your own name in iRL's preferences. In an upcoming version of iRL all actions may be shared to and loaded from an online repository and it's a good idea to make yourself visible there if you mind.

Open the popup button **"Add Action..."** below the actions table and choose "AppleScript", "Keystroke" or "Mouse" from there – the other action types are reserved for future versions:



The new action is selected immediately to let you edit its name.

AppleScript Action

If you have created an AppleScript action, you'll have to enter, well, AppleScript code.

Choose the tab "Edit Action" as shown below, then enter your code:



This example is very simple to read and so are many AppleScripts. However, it is somewhat difficult to find out "the right wordings".

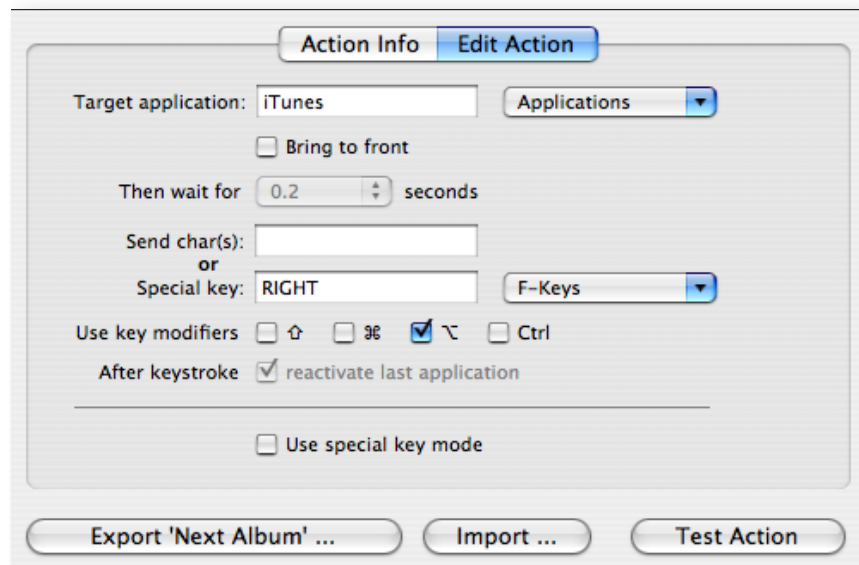
After entering AppleScript code, please click **"Check Syntax"** and your code will be analysed. If all is going well, the code is formatted and highlighted.

You may test this action immediately by pressing **"Test Action"**.

Keystroke Action

Keystroke actions are a very simple means to control applications. Often it's the only way to get things done.

This screenshot shows a typical keystroke example:



This panel is to be read from upside down:

Use application **iTunes** as the target for the keystroke. Now press **"RIGHT"** cursor key, together with "Option" key (shown as ⌥).

By the way, this keystroke (Option-Right) is the only way to make iTunes jump to the next album.

There are several more options. Creating keystrokes is sometimes a process of trial-and-error. Some applications need a **"Bring to front"** before they accept keystrokes, some need a little time to be waited after activation (See popup button).

If you need to activate the target application, you may later **reactivate the last application** by another option.

At last, some apps behave even more strange, e.g. Flash plugins in web browsers, or PowerPoint, ... They need a **"special key mode"** which can be enabled by the last option.

The popup **"Applications"** gives you an shortcut to enter application names into the text field to the left. It holds all active applications.

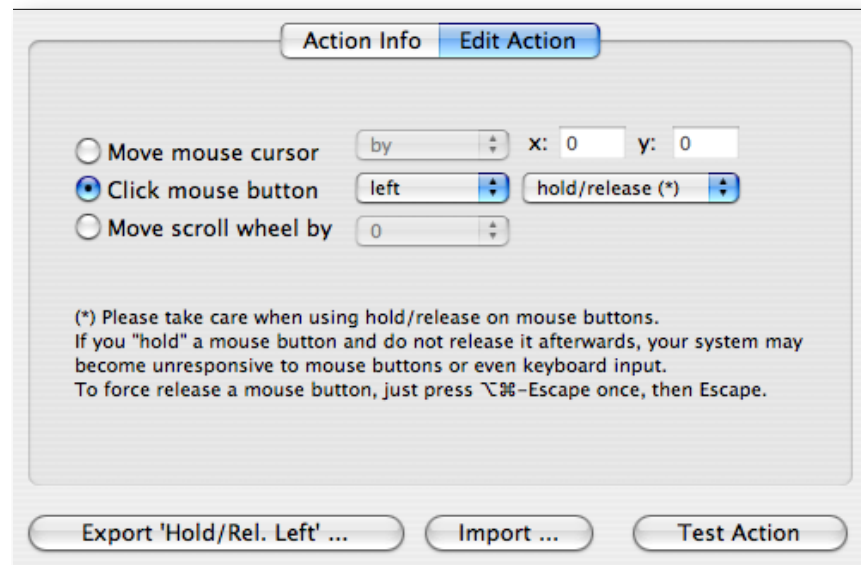
If you need to enter special keys like F-Keys, please use the respective popup menu, as function keys will mostly perform their dedicated action immediately and iRL has no chance to get the key code itself.

Mouse Action

Mouse actions are really easy to understand and to use. You may

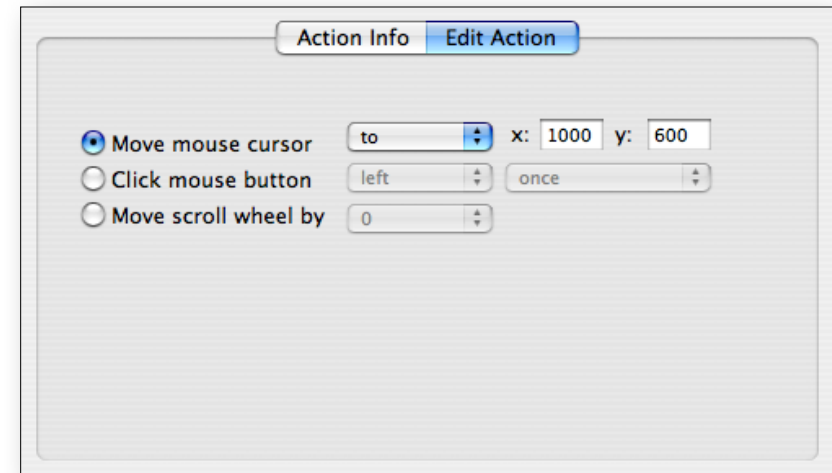
- move the mouse cursor relative to the current position,
- move the mouse to a specific location on the screen
- perform (multiple) mouse clicks with left, middle or right button
- hold and release the mouse buttons
- move the mouse's scroll wheel

There is one caveat with holding down mouse buttons. If you forget to release the mouse button with a complementary action, the mouse buttons may become unusable to applications. Please note the hint on the mouse action editor:

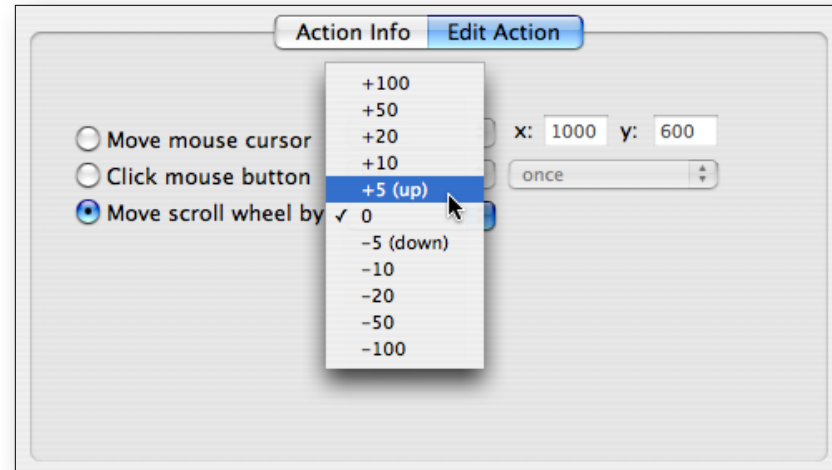


The coordinates represent pixels and are starting at the lower left of your screen with 0/0 and go up to 1280/1024, e.g., at the upper right corner.

Here is an example for a mouse cursor jump to 1000/600:



The scroll wheel movement goes from -100 to +100, with +5 for a small move up:



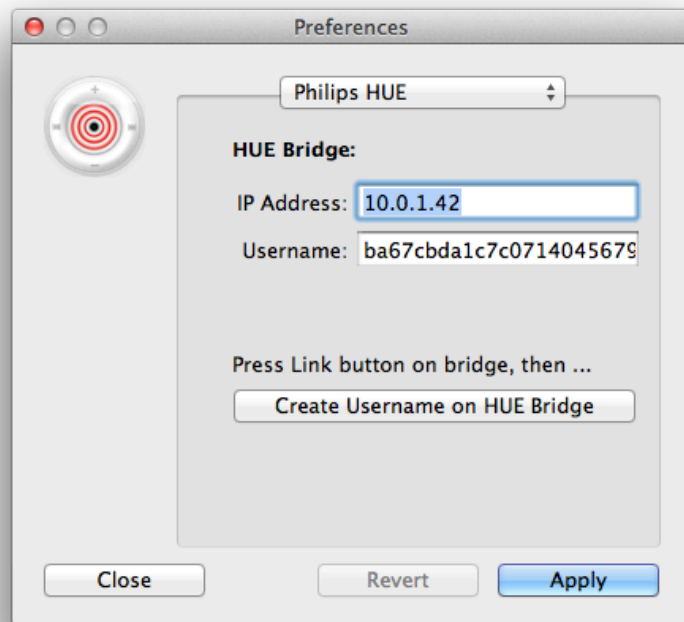
Philips HUE Action

Beginning with iRed Lite 1.1 you can also control a Philips HUE. You don't know what this is? Visit www.meethue.com to see the possibilities of this lighting system. To date (2013) it is only available at the Apple Store.

Support for Philips HUE is limited to Mac OS X 10.8 (Mountain Lion) or later.

Configure HUE

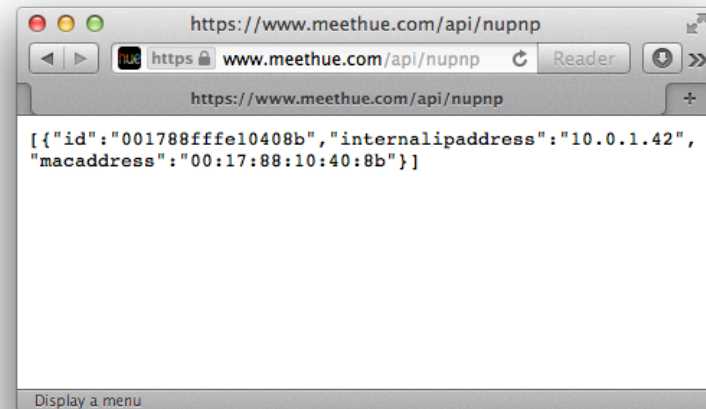
To control your HUE you have to enter the IP address of the HUE Bridge into iRed Lite's preferences:



If you don't know the IP address of the Bridge, visit this website with a web browser on your Mac:

<https://www.meethue.com/api/nupnp>

This looks strange, but it will show you the data of your HUE bridge on your local network:

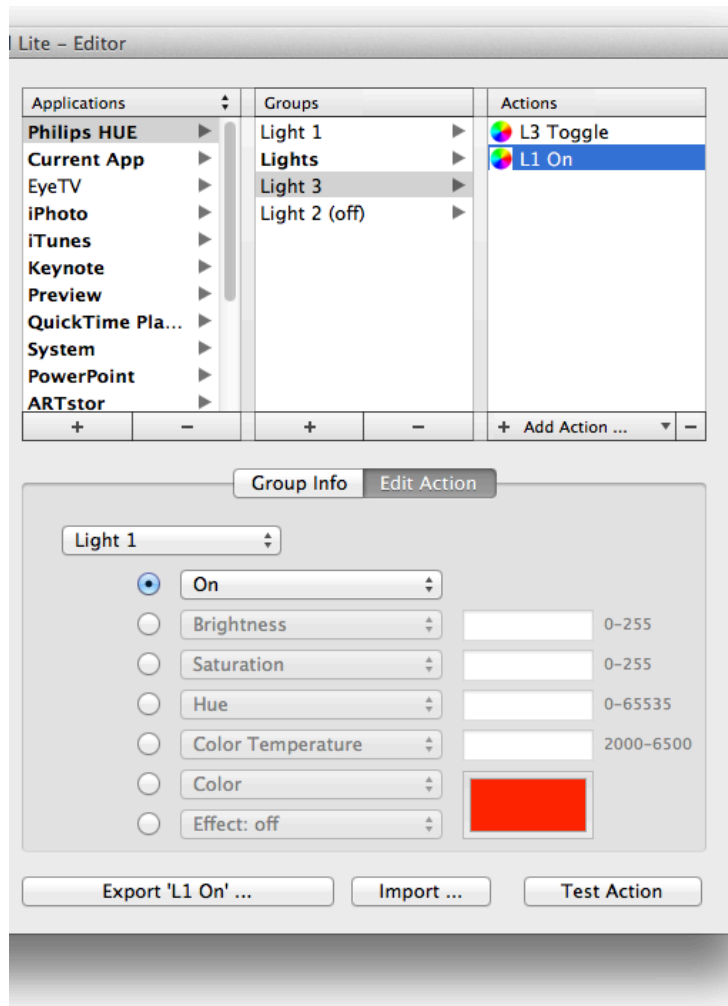


Next, you'll need to add a „user“ to the bridge. Every app which wants to communicate with the bridge needs one user. As a security measure you need physical access to the bridge for this step. Enter the IP address, then **press the blue link button on the bridge**, then click „Create Username on HUE Bridge“ on the Preferences panel.

A new user name is generated and registered with the bridge.

Edit Philips HUE Action

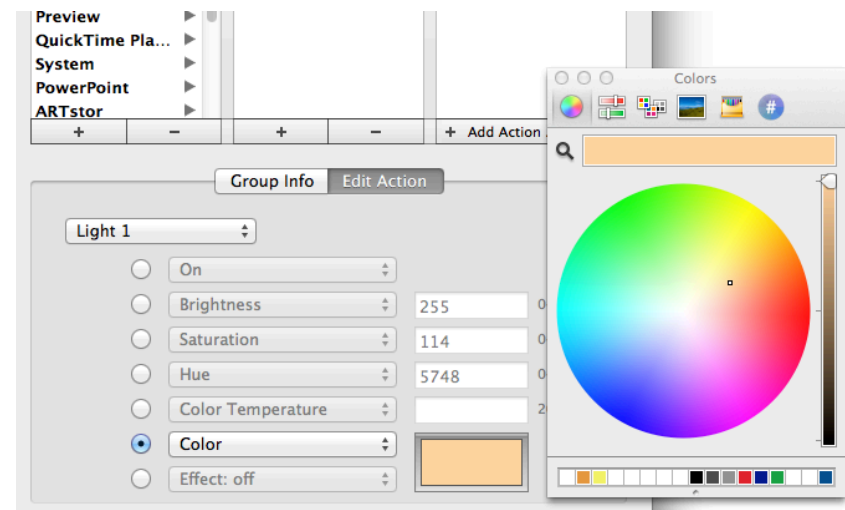
After you have added a new hue action using the Add Action popup, it looks like here:



The name of the action will change automatically with your settings, but you may also overwrite this.

These are your options:

- Choose a light which is to be affected (currently Light 1-3 only)
- Set this light to on, off or toggle its on-off state
- Set brightness from 0-255
- Set color saturation (0-255)
- Set color hue, i.e. the color on a color wheel (0-65535)
- Color Temperature (2000K-6500K, warm to cold)
- Choose a Color from a color panel (see below), the values for brightness, saturation and hue are entered accordingly.
- Effect/Alert: color loop, effect off, alert flash once, alert flash for 30 secs., alert off.



Please note: The Philips HUE system is limited in its capabilities, i.e. it cannot show all colors as seen on the screen.

Please note: Fast changes to the settings are not possible at all, 3 changes per second are the maximum. This may improve with new firmware versions of the HUE bridge.

Adding Actions to OSD Buttons

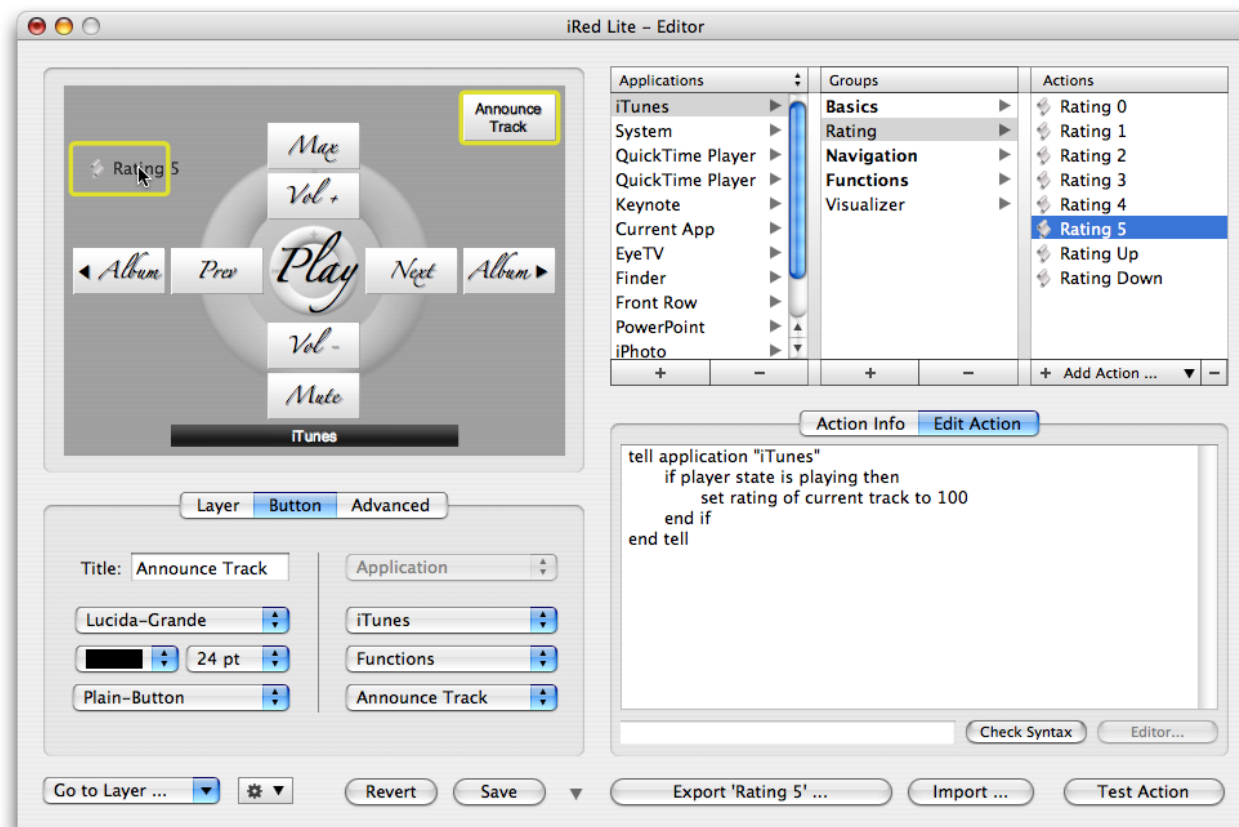
Now that we have actions we need to assign them to the buttons of the Apple Remote.

This is fairly easy: Drag&Drop an action from the action list on the right directly onto the OSD panel.

The button will take the action's name by default, which you may then change on the left pane.

You may wonder "for what are the OSD buttons besides the usual ones?". Well, these buttons are only accessible by mouse by now.

However, there is one hidden feature: the button located at top right ("Announce Track" in this screenshot) is performed when double-clicking the center "Play" button of the Apple Remote!

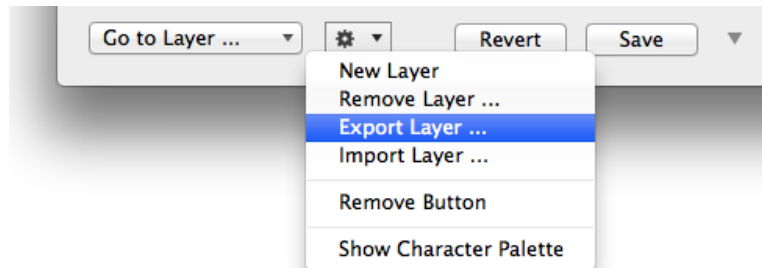


Import/Export Layer

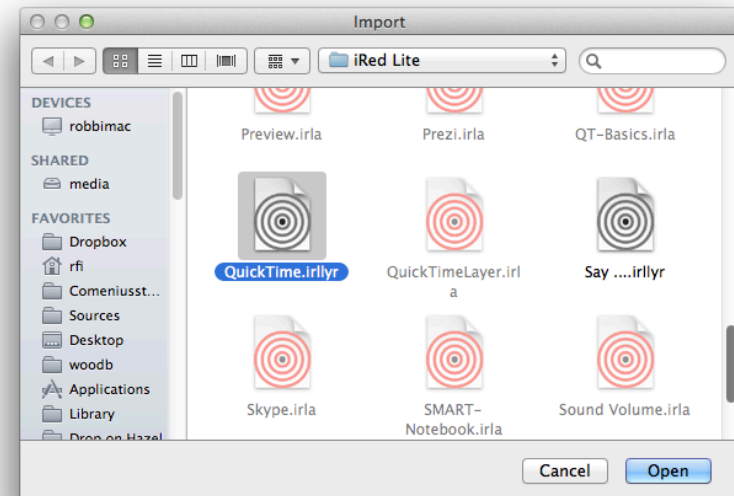
Since iRed Lite 1.1 you can also import/export complete layers with their associated actions.

To export a layer:

- Select the layer from the editors layer popup
- Choose „Export Layer...” from the gear popup
- Select the layer in the Open Panel



To import a layer, simply choose „Import Layer...” from the popup, then use the Open Panel to find a respective layer file:



Active Layer

The active layer is the one which will be shown when you press the Menu button on your Apple Remote. All buttons on the remote will trigger the respective buttons on this active layer.

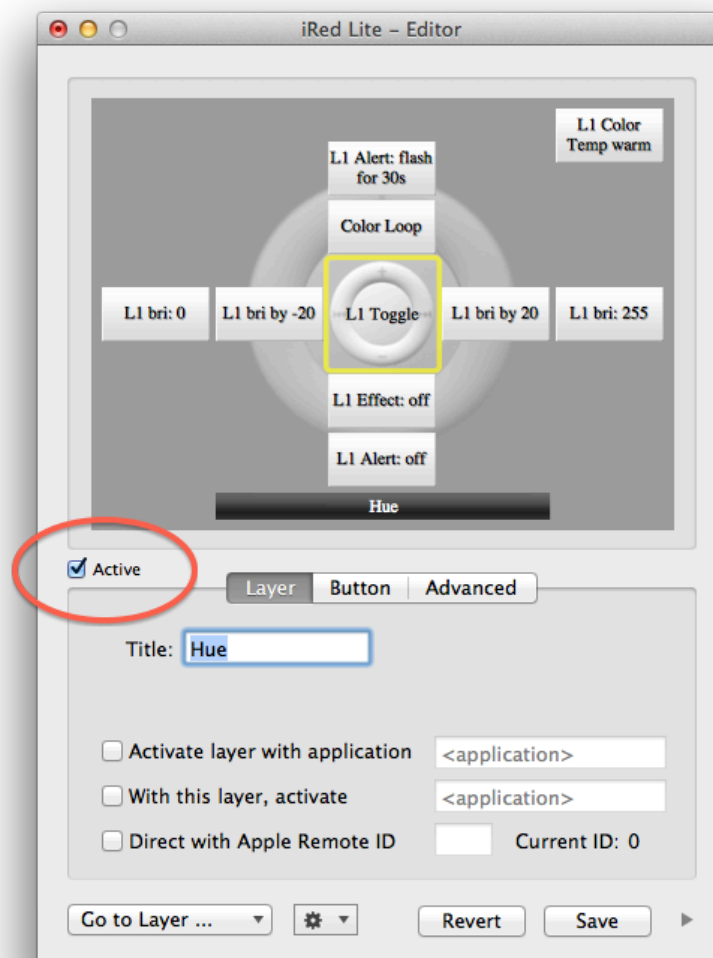
You can also opt to change the active layer automatically, e.g. when an application is the frontmost, or when you use more than one Apple Remote with different IDs.

See chapter „[Layer section](#)“ for more details.

To change the active layer

- Press menu to show the OSD (on screen display)
- Hold menu to enter into layer selection mode (the layer's name will be announced by the computer, if you have set this in preferences)
- Use right/left or up/down on the Apple Remote to go to the next/prev layer
- Press center/play button to activate the current layer
- Press menu again to hide the OSD

With V1.1 you can also set the active layer by this button:



Technical Details

iRed Lite stores its library containing your remotes and actions in XML format.

You find this file named "archive.xml" in a folder "**iRed Lite**" in "**Library/Application Support**" in your home folder.

The preferences are stored as **de.tinb.iRedLite.plist** in the usual place, i.e. "**Library/Preferences**" in your home folder.

iRed Lite – The Future

This manual describes another version of iRed Lite.

Several features may change over time, some may not work as expected yet.

Many features are already on my to-do-list, here a quick glance:

- Copy/Paste actions – **done**
- Online repository for actions, layers, remotes
- ~~Undo support~~ – **done? No, not fully :(**
- more action types
- templates/themes for buttons/layers

If you interested in a special feature, please contact me:
ired@filewell.com

One last thing: **iRed Lite** will become shareware someday. My price tag is about \$12 (10 €), which should be affordable and will help me to drive iRed Lite to an outstanding product.

Have Fun,

Robert Fischer, tin:b Software, August 2013